

Ayre Chamberlain Gaunt submits plans for £13m 'later living' homes in Newbury

5 December, 2017 By [Richard Waite](#)

Ayre Chamberlain Gaunt has lodged plans for 61 flats as part of a proposed 'later living' development in the heart of historic Newbury, Berkshire

The 5,693m² scheme for 11-15 Bartholomew Street for Eden Retirement Living will replace an existing [1960s building and car park](#) with a series of three and four storey blocks arranged in a C shape around a split-level landscaped courtyard.

The 0.33ha plot is on a pedestrianised street, close to the Kennet shopping centre. A previously approved scheme by Gaunt Francis Architects featured four shops below 47 flats.

The [new £13 million sheltered apartment scheme](#), which has been designed with a simple material palette of red brick and bronze, features communal facilities such as a residents' lounge, arts studio and a fitness suite as well as concierge services, guest accommodation, shops and car parking.

Ayre Chamberlain Gaunt director David Ayre said: 'We've drawn inspiration from the neighbouring 19th-century Georgian buildings and courtyard spaces to design a contemporary scheme that responds sensitively to the local context and provides an attractive backdrop for the Grade I-listed St Nicholas Church.'

'The scheme will regenerate an underutilised site to provide additional amenities for the community and contemporary, aspirational homes for later living.'

Subjected to planning the scheme is expected to start on site in March 2018.



Ayre chamberlain gaunt newbury submission december 2017

elevation of Ayre Chamberlian Gaunt's proposed 6,335m² scheme for 11-15 Bartholomew Street, Newbury for Eden Retirement Living [submitted December 2017]

[zoom in](#) [zoom out](#)

Project data

Location Newbury

Type of project Retirement Living Development

Client Eden Retirement Living

Architect Ayre Chamberlain Gaunt

Landscape architect IJLA (Ian Jackson Landscape Architecture)

Planning consultant Tanner & Tilley

Structural engineer Pindoria Associates

M&E consultant MKP Consultants

Start on site date March 2018

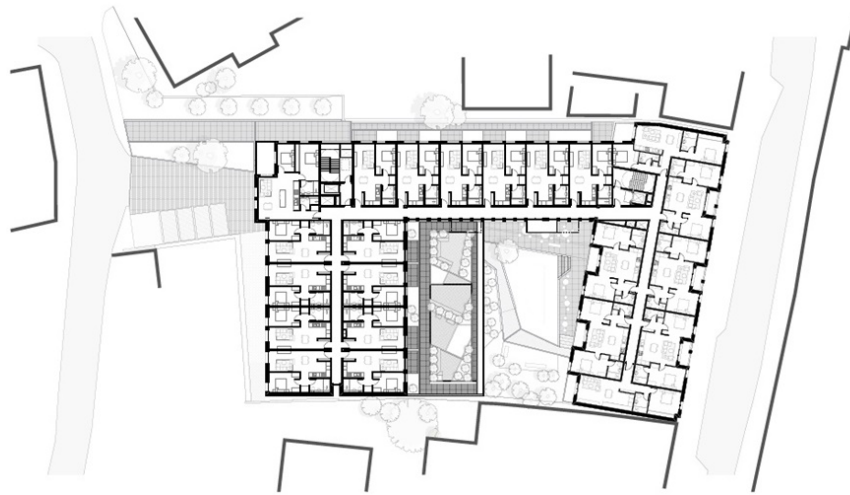
Completion date October 2019

Contract duration 19 months

Gross internal floor area 5,693m²

Form of contract and/or procurement Construction Management

Total cost £13 million



Ayre chamberlain gaunt newbury submission december 2017 plan

[zoom in](#) [zoom out](#)