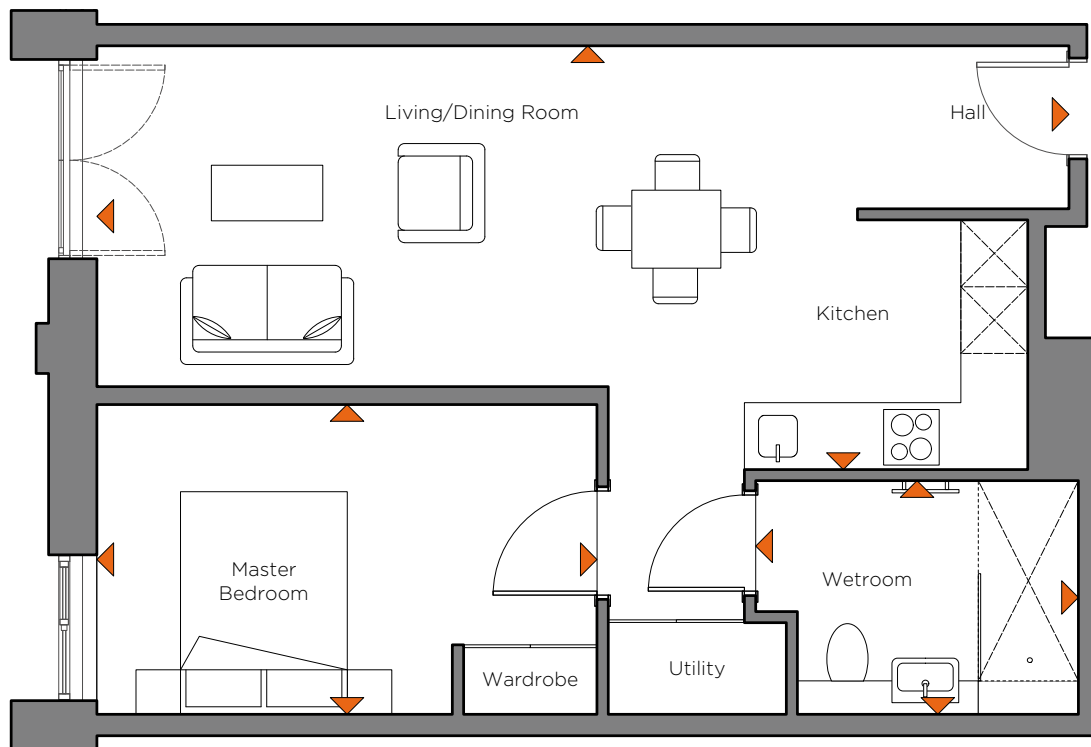


# Pearl House

Newbury

*Eden*  
Retirement Living

Plot Type: 1AX



## Internal measurements

	Metric (m <sup>2</sup> )	Imperial (ft <sup>2</sup> )
Kitchen/Living/Dining Room*	8.73 x 3.80	28'7" x 12'5"
Master Bedroom	4.49 x 2.78	14'8" x 9'1"
Bathroom	2.90 x 2.10	9'6" x 6'11"
<b>Apartment Area**</b>	<b>51.75 m<sup>2</sup></b>	<b>557.04 ft<sup>2</sup></b>
<b>Overall Area</b>	<b>51.75 m<sup>2</sup></b>	<b>557.04 ft<sup>2</sup></b>



**Pearl House**  
11-15 Bartholomew Street, Newbury,  
West Berkshire  
[edenrl.com/pearl-house](http://edenrl.com/pearl-house)

\* Area includes circulation + utility cupboard  
\*\* Area includes internal walls/partitions

Room layouts are indicative.  
Movable furniture is not included.



**Associated Retirement Community Operators**  
We are prospective ARCO members and aim to comply with the ARCO Consumer Code at all of the retirement communities we are building.