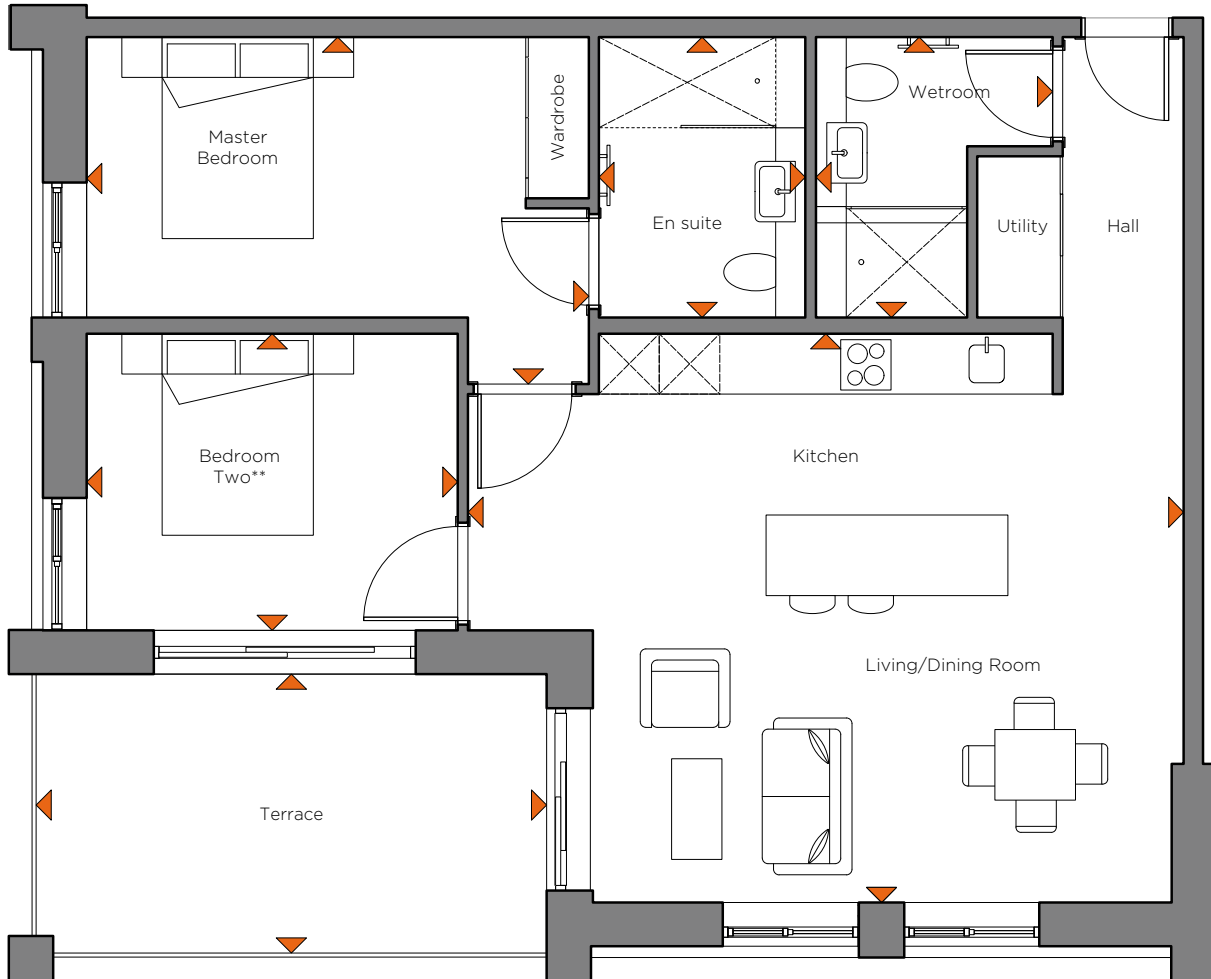


Pearl House

Newbury

Eden
Retirement Living

Plot Type: 2B



Internal measurements

	Metric (m ²)	Imperial (ft ²)
Kitchen/Living/Dining Room *	7.10 x 5.64	23'3" x 18'6"
Master Bedroom	4.98 x 3.44	10' x 16'4"
Ensuite	2.78 x 2.05	9'1" x 6'8"
Bedroom 2 **	3.68 x 2.94	12' x 9'7"
Bathroom	2.92 x 2.00	9'7" x 6'6"
Terrace	5.06 x 2.76	16'7" x 9'
Apartment Area ***	79.87 m²	859.72 ft²
Overall Area	93.86 m²	1010.31 ft²



Pearl House
11-15 Bartholomew Street, Newbury,
West Berkshire
edenrl.com/pearl-house

* Area includes circulation + utility cupboard
** Or separate dining room, study, etc.
*** Area includes internal walls/partitions
Room layouts are indicative.
Movable furniture is not included.



Associated Retirement Community Operators
We are prospective ARCO members and aim to comply with the ARCO Consumer Code at all of the retirement communities we are building.