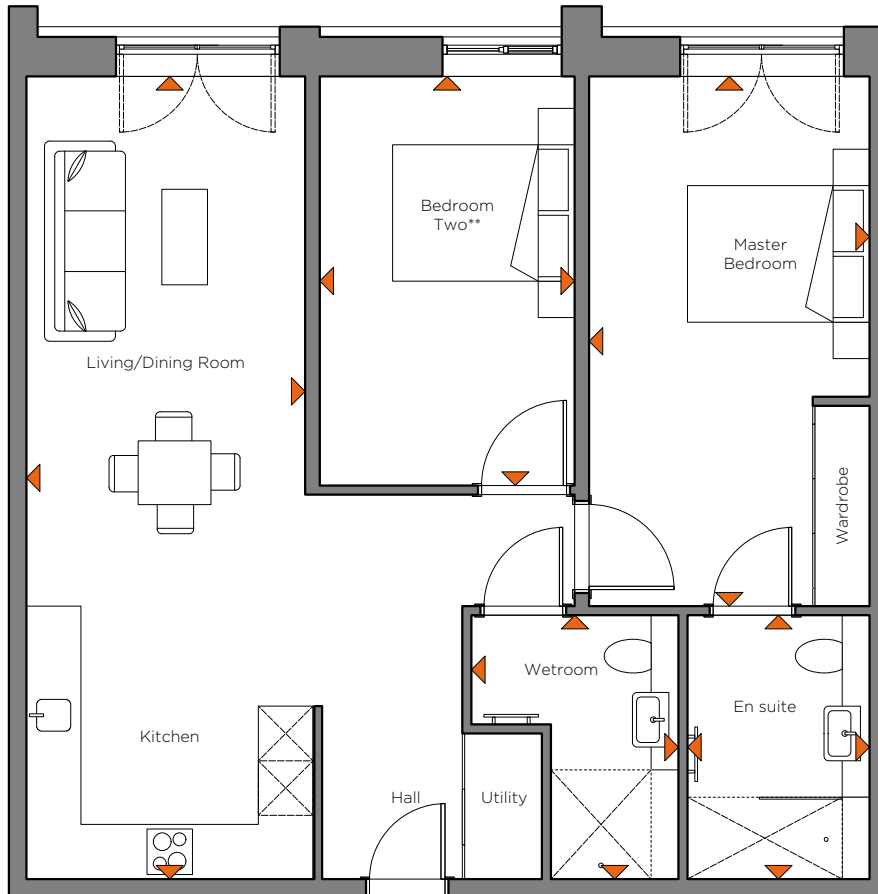


# Pearl House

Newbury



Plot Type: 2J



## Internal measurements

	Metric (m <sup>2</sup> )	Imperial (ft <sup>2</sup> )
Kitchen/Living/Dining Room *	3.06 x 8.81	10' x 28'11"
Master Bedroom	3.08 x 5.81	10'1" x 19'
Ensuite	2.90 x 2.00	9'6" x 6'6"
Bedroom 2 **	2.80 x 4.49	9'2" x 14'8"
Bathroom	2.90 x 2.27	9'6" x 7'5"
<b>Apartment Area ***</b>	<b>81.71 m<sup>2</sup></b>	<b>879.53 ft<sup>2</sup></b>
<b>Overall Area</b>	<b>81.71 m<sup>2</sup></b>	<b>879.53 ft<sup>2</sup></b>



**Pearl House**  
 11-15 Bartholomew Street, Newbury,  
 West Berkshire  
[edenrl.com/pearl-house](http://edenrl.com/pearl-house)

\* Area includes circulation + utility cupboard  
 \*\* Or separate dining room, study, etc.  
 \*\*\* Area includes internal walls/partitions  
 Room layouts are indicative.  
 Movable furniture is not included.



**Associated Retirement Community Operators**  
 We are prospective ARCO members and aim to comply with the ARCO Consumer Code at all of the retirement communities we are building.